

Piezoelectric Type Accelerometer



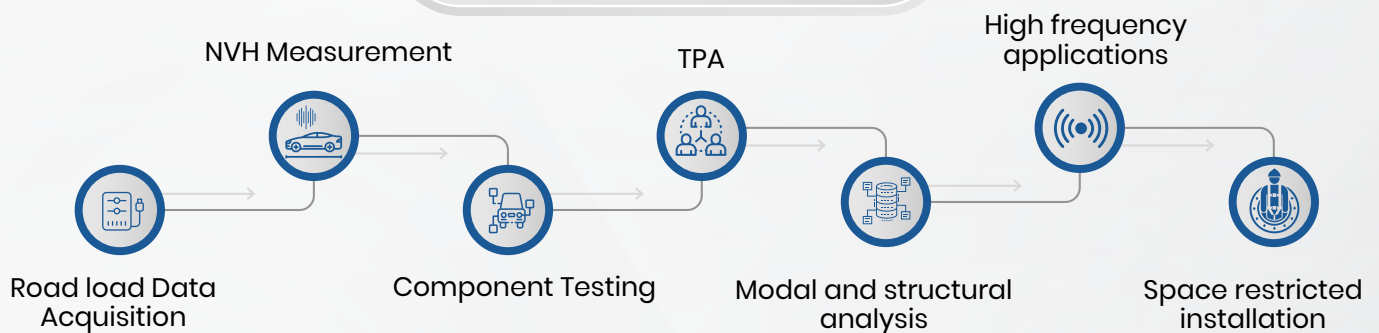
2 models available to best suit your application

730ZT 1.0mV/m/s

731ZT 10.0mV/m/s²

730ZT/731ZT is a 3-axis accelerometer with a built-in pre-amplifier which is 10 cubic millimeter in size and 4.4g in weight. Its high frequency response and tiny super-lightweight feature allow to measure acceleration on small objects. It is also appropriate for various tests on engines because of its high operational temperature.

Applications



Key features



TEDS



Tiny & Lightweight



3 Axes



Built-in Pre-amplifier



Comes with a 3.3m special cable

| Model | 730ZT | 731ZT |
|---|---|-------------------------------|
| | Standard type | High sensitivity type |
| Sensitivity (mV/m/s ²) | 1.0 ± 10% (9.8 mV/g) | 10.0 ± 10% (98 mV/g) |
| Transverse sensitivity (max) | Less than 5% | |
| Base noise (max) | 20 μ Vrms | 40 μ Vrms |
| Compensated temperature range | -50 °C ~ 120 °C | -50 °C ~ 110 °C |
| Frequency response | X, Y axis: 0.5 Hz ~ 15,000 Hz | X, Y axis: 0.5 Hz ~ 10,000 Hz |
| (±3dB) | Z axis: 0.5 Hz ~ 20,000 Hz | Z axis: 0.5 Hz ~ 18,000 Hz |
| Resonance Frequency | 55 kHz or higher (Z axis) | |
| Max. acceleration (m/s ²) | ±5000 (±510g) | ±450(±46g) |
| Max. tolerated acceleration (m/s ²) | 30,000(3,060g) or higher | 30,000(3,060g) or higher |
| Output impedance | Less than 100 Ω | Less than 500 Ω |
| Ground | Case ground | |
| Cable | Special cable * CL-730B (included) / CL-730M (optional) | |
| Connector | CZ664 | |
| Case material | Titanium | |
| Size (W x H x D) | 10 mm x 10 mm x 10 mm (Connector excluded) | |
| Weight | approx. 4.4 g | |
| Included | Mounting screw (M3 x 0.5 x 4) x1, CL-730B (3.3m, 4P-BNC), Mount base x1 | |

Optional Accessories

| | | |
|--------------|--------------------------------------|---------|
| Cable | For 730ZT/731ZT (3.3m, 4P-Miniature) | CL-730M |
| | For 730ZT/731ZT (3.3m, 4P-BNC) | CL-730B |
| Mount Base | For 730ZT/731ZT 5 pcs included | PS-730Z |
| Magnet Mount | For 730ZT/731ZT | MG-730Z |



Cable (3.3m, 4P-Miniature)



Cable (3.3m, 4P-BNC)

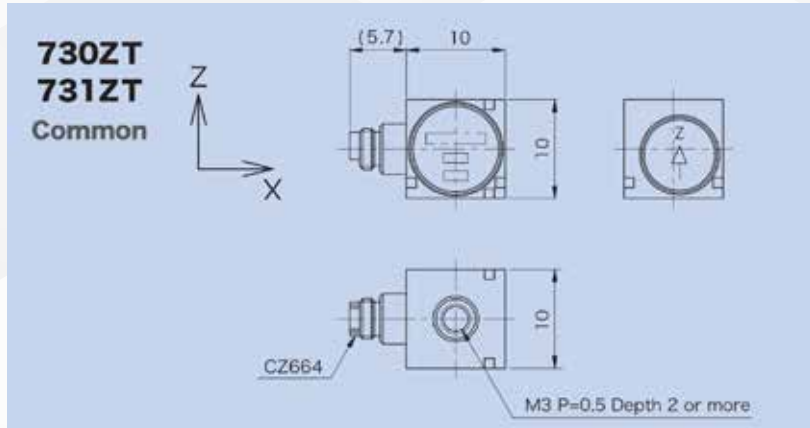


Mount base



Magnet mount

Dimensions



Model

611

611W

| | | |
|--------------------------------------|---------------------|------------------------|
| Feature | Super small | Super small Waterproof |
| Max.Acceleration (m/s ²) | ±100,000 (±10,197g) | ±10,000 (±1,020g) |
| Sensitivity (pC/m/s ²) | 0.035 (0.34 pC/g) | 0.0459 (0.45 pC/g) |
| Frequency response (Hz) ±3dB | fc~20,000 | fc~20,000 |
| Compensated temperature range (°C) | -50~160 | -50~160 |
| Cable | 3m (installed) | 3m (installed) |
| Weight (g) | approx. 0.2 | approx. 0.2 |
| Waterproof rank | -- | IPX8 |

Model

611ZS

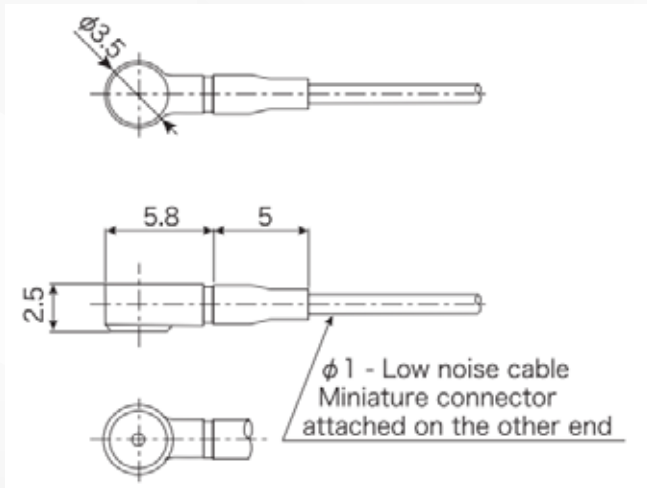
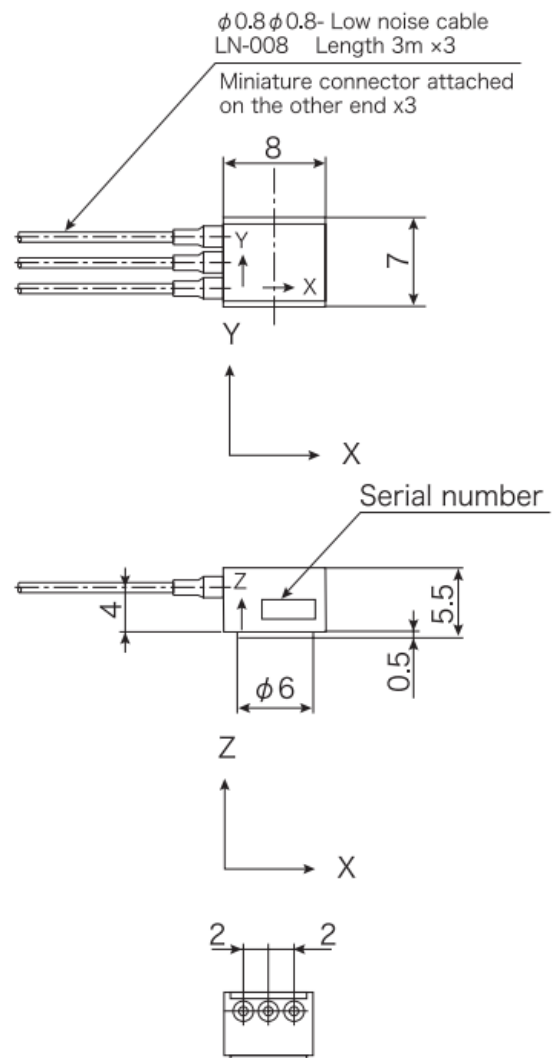
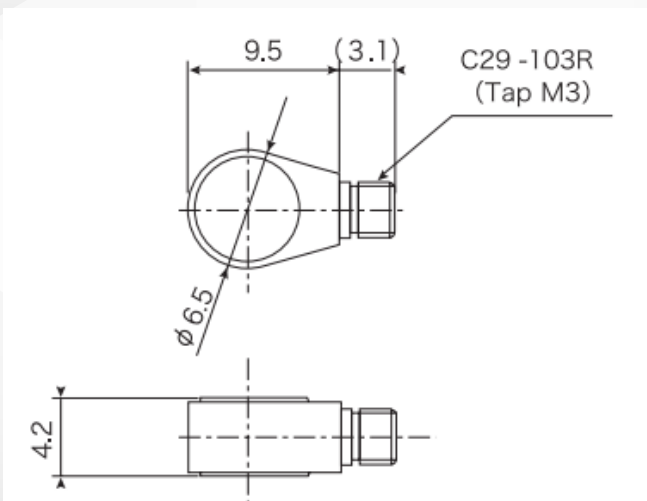
611ZSW

| | | |
|--------------------------------------|-------------------|------------------------|
| Feature | Super small | Super small Waterproof |
| Max.Acceleration (m/s ²) | +25,000 (±2,550g) | ±25,000 (±2,550g) |
| Sensitivity (pC/m/s ²) | 0.04 (0.39 pC/g) | 0.04 (0.39 pC/g) |
| Frequency response (Hz) ±3dB | fc~20,000 | fc~20,000 |
| Compensated temperature range (°C) | -50~160 | -50~160 |
| Cable | 3m (installed) | 3m (installed) |
| Weight (g) | approx. 1.2 | approx. 1.3 |
| Waterproof rank | -- | IPX8 |



Model**612**

| | |
|---------------------------------------|-------------------|
| Feature | Small |
| Max. Acceleration (m/s ²) | ±10,000 (±1,020g) |
| Sensitivity (pC/m/s ²) | 0.17 (1.68 pC/g) |
| Frequency response(Hz) ±3dB | fc~18,000 |
| Compensated temperature range | -50~160 (C) |
| Weight (g) | 0.8 |

612**611****611ZS****612**

9324325522



sales@tsmtechnic.com



Off. No 224, 2nd floor, building Gera imperium
 Rise Wipro circle, near Wipro company,
 Hinjewadi phase 2, 411057, Pune